

B. Bunny
D. Duck
11 October 2013
FE 208 Lab #2

Summary of Survey for Ye' Ol' Homestead Traverse

This report summarizes the traverse survey for Ye' Ol' Homestead located in McDonald-Dunn Forest, Benton County, Oregon. Survey begun and completed on 11 October 2013.

B. Bunny and D. Duck performed the low-order survey for Ye' Ol' Homestead. Survey directions were collected with Silva hand compasses. Declination were verified as set to 16° East. Slope distance measured with a 100' steel tape and slope angle measured with clinometers. Backsights were taken on all compass and clinometer measurements to verify foresights.

Traverse Summary

Total horizontal distance = 1660.9 feet
Total slope distance = 1671.0 feet
Area = 2.6 acres

Error Summary

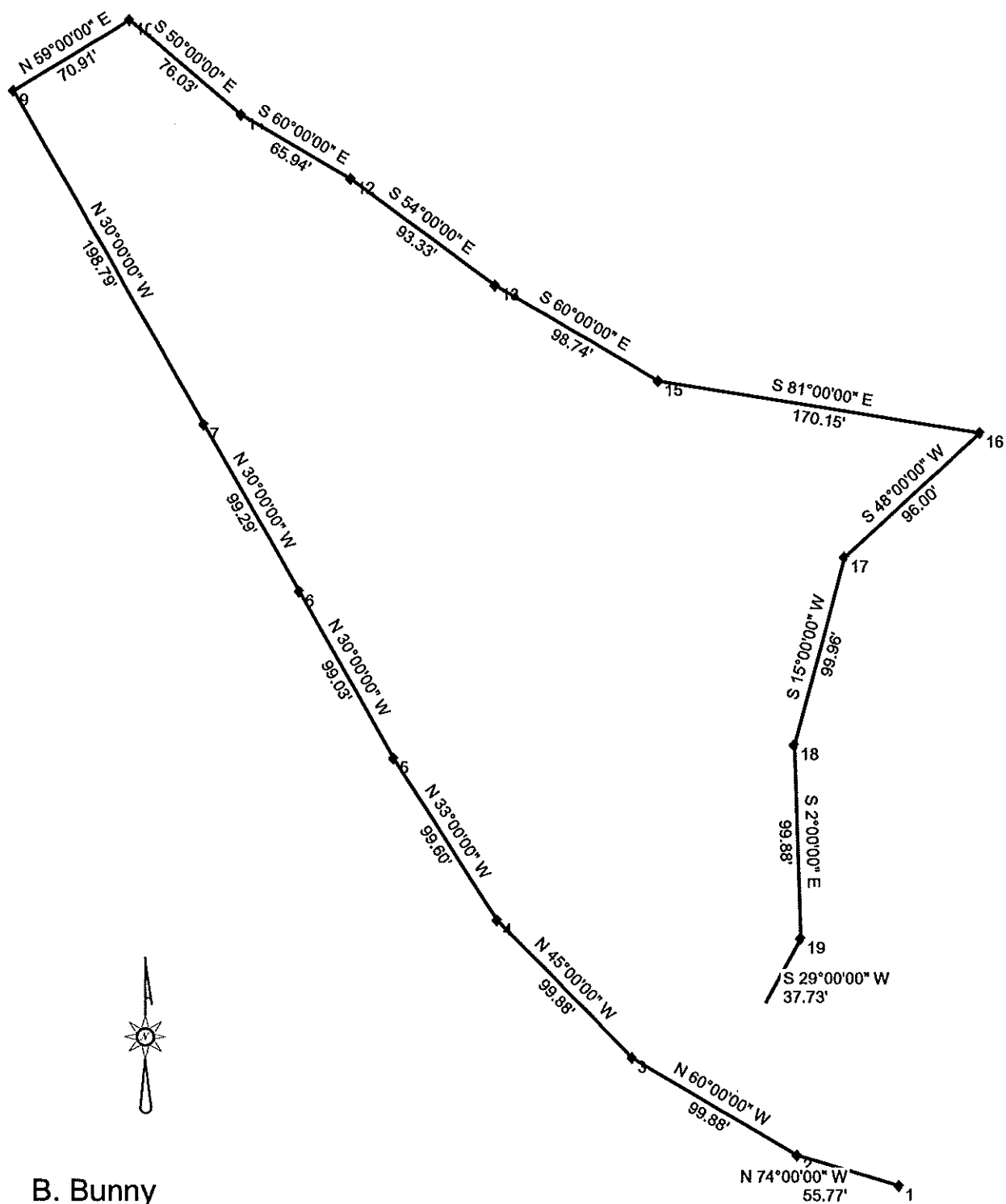
Linear error = 117.1 feet; direction $S36^{\circ} 55'E$
Northing: 93.6 feet
Easting: -70.3 feet
Elevation: 13.1 feet

Relative error = 1:14 (7.1%)

Summary description

Ye' Ol' Homestead is mostly open grassland (false brome) with scattered pine and Douglas-fir trees. Trees are mostly small-sized, less than 60 feet in height. The area is bordered on 2 sides by roads and larger timber on the remaining sides. Existing apple trees and rose bushes suggest the area has been occupied at some distant past. Slopes are gentle and a small dry spring was found in the center.

Ye Ol' Homestead Traverse_



B. Bunny
D. Duck
Surveyed 11 October 2013



| STA | SD | % | HD | B&C A+D | B&C BK |
|-----|------|----|------|------------|-----------|
| A | | | | N74W | |
| B | 56' | 9 | 55.8 | N60W 572E | |
| C | 100' | 5 | | N45W 560E | |
| D | 100' | 5 | | N33W 544E | |
| E | 100' | 9 | | N30W 532E | |
| F | 100' | 14 | | S30E | |

J. L. DARLING CORP. TACOMA, WA
www.RiteInTheRain.com

No. 302

Rite in the Rain

